

LAND4CLIMATE

Utilization of private land for mainstreaming nature-based solution in the systemic transformation towards a climate-resilient Europe

Project description

LAND4CLIMATE aims to increase the resilience of landscapes and urban settlements in the continental biogeographical area and beyond by nudging the implementation of nature-based solutions (NBS), which are at large-scale still in their infancy. However, there is a tardy uptake of NBS in practice because NBS need more land than grey infrastructure and hitherto approaches to NBS often focus on public land. Private land, however, bears huge potential for climate resilience, both as a supplier (in terms of ecosystem service provision) and a recipient of benefits of NBS (in terms of climate risk reduction).

LAND4CLIMATE addresses these implementation gaps. Climate resilience needs land! LAND4CLIMATE aims to get access to private land for the implementation of NBS, not by buying land, but through the development of innovative governance schemes and business models, such as land readjustments schemes, strategic land leases and easements. The main objective of LAND4CLIMATE is to co-design and validate NBS on private land through implementation and upscaling with innovative strategies of land policy for a transformative climate-resilient future in areas with multiple risks, especially coupled extreme hydrometeorological events such as floods, droughts and urban heat.

LAND4CLIMATE will operationalize this objective in six frontrunner cases in Austria, Czechia, Germany, Italy, Romania and Slovakia by:

- Identifying cause and effect relations of climate risks and NBS to allocate NBS effectively and efficiently
- Developing governance and business models to implement legitimate and just strategies of land policy for NBS on private land
- Enabling successful replication and upscaling

By involving seven replicant regions in the aforementioned countries, LAND4CLIMATE becomes able to replicate, foster and inspire new synergies between NBS beneficiaries and landowners on a wider scale and contribute to the EU's mission for adaptation to climate change.

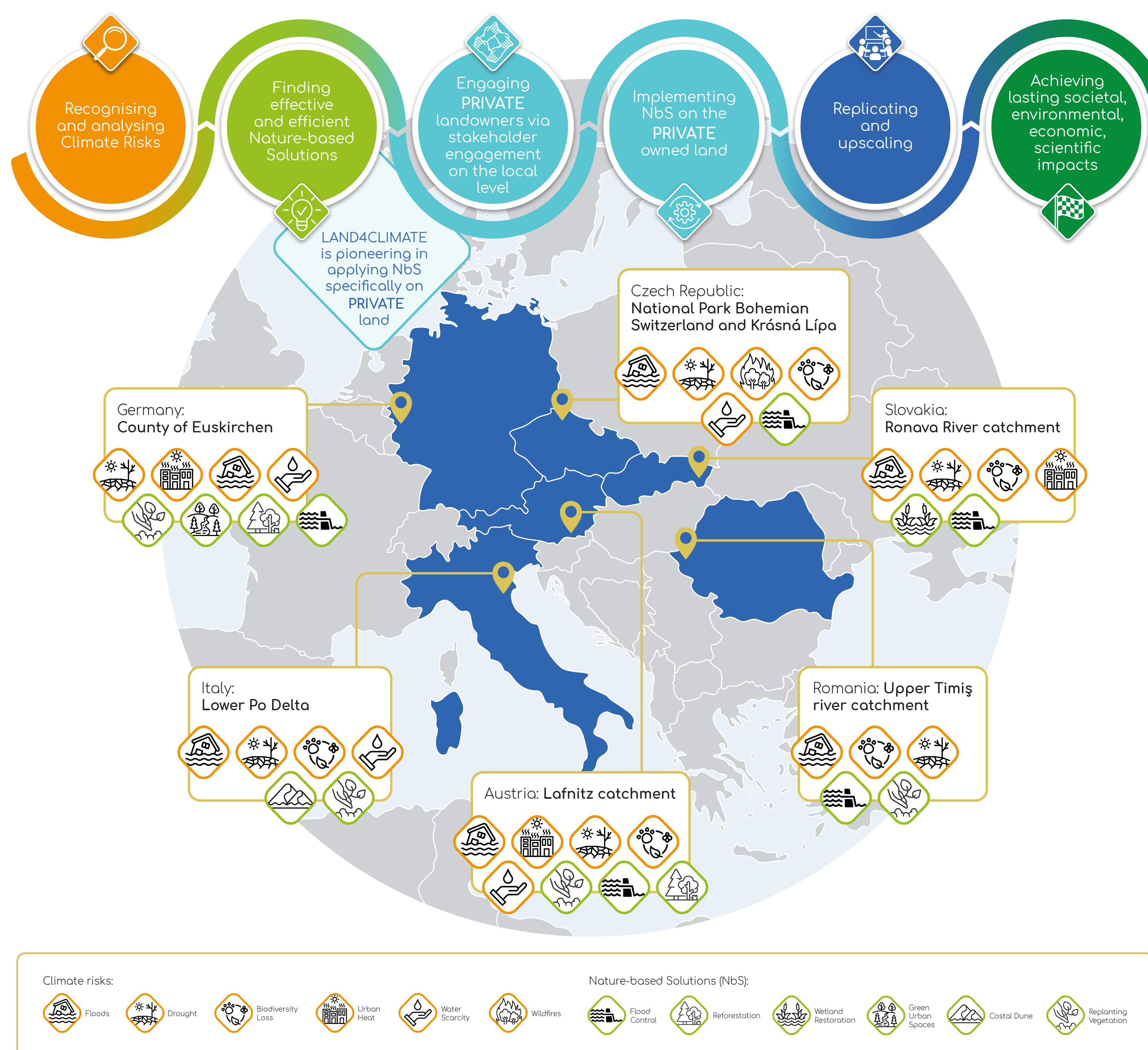
Aim of the project

LAND4CLIMATE explores how Europe's resilience to the impacts of climate change can be increased by implementing nature-based solutions on private land. The project aims to apply and evaluate land policy measures and business models that could motivate and empower private landowners and stakeholders to implement nature-based solutions. These measures should be implemented systematically, efficiently, legitimately and equitably in continental European landscapes and urban areas.

Work packages

1. Evidence base for climate-resilient NBS
 - Future-oriented local climate adaptation scenarios
 - Climate Risk Assessment
 - Visualisation of cause-effect relations and potential systemic effects
 - List of stakeholders preferred no-regret NBS measures
2. Effectiveness and efficiency NBS
 - Biophysical and socio-economic assessment of NBS efficiency
 - Assessment of co-benefits and trade-offs
 - Configuration of local climate risk outcomes with climate-resilient NBS integration and permitting pathways
3. Barriers and success factors for transformative NBS
 - Good institutional practices, success, and limiting factors of NBS implementation
 - Review of instruments and strategies
 - Innovative business model proposals
4. NBS Implementation
 - NBS strategy and implementation plans
 - Preliminary evidence of NBS performance and sustainability
 - Capacity needs assessment and training modules
5. Replication & Upscaling
 - Policy briefs on NBS for resilience and sustainability
 - Replication Guidelines for climate-resilient NBS
 - Identified financial instruments and invest-ment packages
6. Communication, dissemination and networking
 - Dissemination and communication strategy
 - Communication actions in front-running and replicating regions
 - Knowledge dissemination and exploitation

Utilising Private land for climate resilience



Contact

Prof. Dr. Stefan Greiving
+49 - (0) 231/755- 2213
stefan.greiving@tu-dortmund.de

Prof. Dr. Thomas Hartmann
+49 - (0)231/755- 2228
thomas.hartmann@tu-dortmund.de

Sophie Holtkötter
+49 - (0) 231/755 - 2443
sophie.holtkoetter@tu-dortmund.de

Dr.-Ing. Peter Davids
+49 - (0) 231/755 - 8902
peter.davids@tu-dortmund.de

B. Ayça Ataç-Studt
+49 - (0) 231/755- 8914
ayca.atac@tu-dortmund.de



Funding and time-frame

European Climate, Infrastructure and Environment Executive Agency (CINEA)



Timeframe: September 2023 to August 2027

